



NUMBER: 23-008-06

GROUP: Body

DATE: February 11, 2006

This bulletin is supplied as technical information only and is not an authorization for repair. No part of this publication may be reproduced, stored in a retrieval system, or transmitted, in any form or by any means, electronic, mechanical, photocopying, or otherwise, without written permission of DaimlerChrysler Corporation.

SUBJECT:

Front Door Glass - Loose, Sticks, Binds, Moan-Like Sound, Or Express-Up Reversal

OVERVIEW:

This bulletin involves inspecting and correcting several possible front door glass issues.

MODELS:

2006	(WK/WH)	Grand Cherokee
2006	(XK/XH)	Commander

SYMPTOM/CONDITION:

The customer may experience one or more of the following front door glass conditions:

- **Door glass reverses after express-up function is initiated.** This condition may be due to the glass not being properly adjusted to the door, loose window hardware, the glass runs not seated properly, or the door control module has not been initialized properly.
- **Door glass sticks, tracks poorly, pivots, or falls down inside door.** This condition may be due to the glass not being installed correctly to the window regulator clamps.
- **Door glass binds or tracks poorly.** This condition may be due to the glass not being properly adjusted to the door or loose window hardware.

DIAGNOSIS:

If one or more of the above conditions are present, perform the Repair Procedure to the **specific door** that has the condition(s).

PARTS REQUIRED:

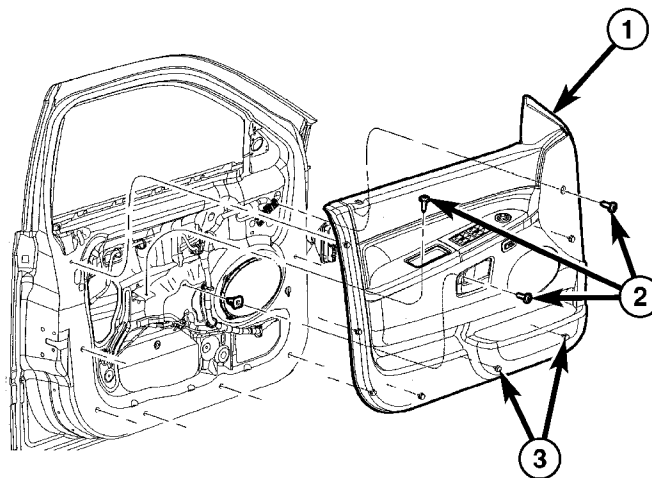
NOTE: The plastic retainers used to attach the door trim panel to the inner door panel must be replaced each time the door trim panel is removed.

Qty.	Part No.	Description
8	06507686AA	Retainer, Door Trim Panel (8 required for Front)
(AR) 1	04589170AB	Regulator, Front Door Window (WK - Right Side)
(AR) 1	04589171AB	Regulator, Front Door Window (WK - Left Side)

Qty.	Part No.	Description
(AR) 1	55396480AB	Regulator, Front Door Window (XK - Right Side)
(AR) 1	55396481AB	Regulator, Front Door Window (XK - Left Side)

REPAIR PROCEDURE:

1. Reset the express-up module for the door window glass in question.
 - a. Drive the glass into the full-up position by pulling up on the window switch to its second detent (manual mode) and holding switch until the glass is fully closed.
 - b. Drive the glass to the full-down position by pushing down on (depress) the window switch until the window glass is fully open. Do not release the window switch. Continue to hold the window switch down for 30 seconds after the window glass is fully open.
 - c. Drive the glass into the full-up position by pulling up on the window switch to its second detent (manual mode) and holding up on the switch for at least one (1) full second after the window glass has fully closed.
 - d. Check the operation of the express-up feature.
 - e. Check that the window glass reverses when in the express-up mode by holding a pen in the path of the glass.
 - f. Once the proper operation of the express-up feature has been verified, clear all Diagnostic Trouble Codes (DTC's).
 - g. If the Condition(s) persist, continue to Step 2.
2. Disconnect and isolate the negative battery cable from the battery.



81318267

Fig. 1 DOOR TRIM PANEL - TYPICAL

- 1 - Door Trim Panel
- 2 - Attaching Screws
- 3 - Trim Panel Retention Clips (8 - Frt / 7 - Rear)

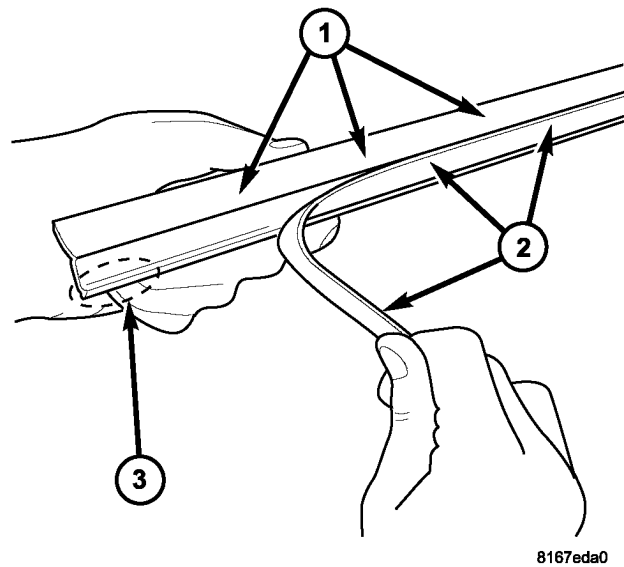


Fig. 2 SECONDARY SEAL REMOVAL

- 1 - Inner Belt Line Molding Assembly/Carrier
- 2 - Secondary (Lower) Seal - Pull To Remove
- 3 - Make Starter Cut Here Using Sharp Knife Prior To Removal Of Secondary (Lower) Seal

-
- 3. Remove the door trim panel (Fig. 1).
 - 4. Remove the door inner belt line molding from the door flange.
 - a. Remove the secondary (lower) seal from the main body of the inner belt line molding. This can be accomplished by making a “starter” cut at one end of the secondary seal. Carefully pull on the loose end of the secondary seal to remove it from the main body of the inner belt line molding (Fig. 2).
 - b. Install the door inner belt line molding to the door flange.
 - 5. Remove the water shield from the door. While the water shield is temporarily removed, the adhesive seal on the water shield must remain clean and not become contaminated.
 - 6. Verify that the window regulator assembly is properly attached to the inner door panel. Tighten the five (5) attaching bolts to 8.8 Nm (75 in. lbs.) (Fig. 3).

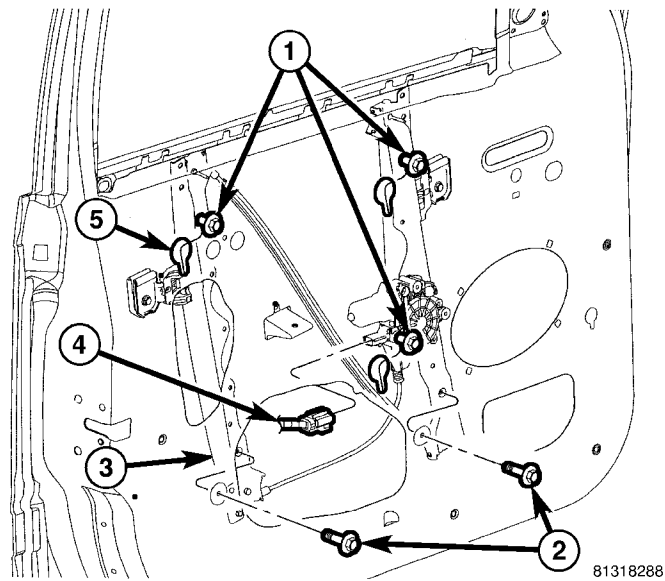


Fig. 3 WINDOW REGULATOR

- 1 - Upper Attaching Bolts
- 2 - Lower Attaching Bolts
- 3 - Window Regulator
- 4 - Regulator Electrical Connector
- 5 - Keyed Holes For Attaching Regulator To Door Panel

-
- 7. Verify that the window glass run channel is properly attached to the inner door panel. Tighten the upper nut and the lower screw to 10 Nm (90 in. lbs.) (Fig. 4).
 - 8. Verify that the glass run channel weatherstrip is fully seated to the glass run channel. Adjust as required.
 - 9. Verify that the window opening weatherstrip is fully seated around the entire window opening and at the bottom of the door pillar.

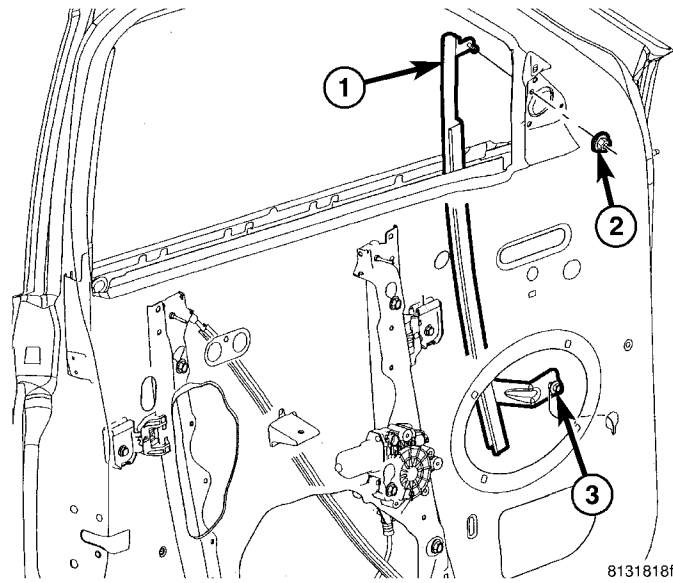
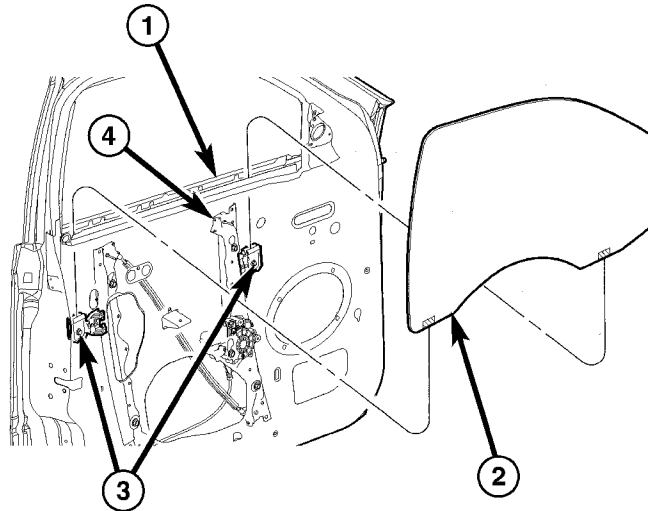


Fig. 4 GLASS RUN CHANNEL

- 1 - Glass Run Channel
- 2 - Upper Attaching Nut
- 3 - Lower Attaching Screw

-
10. Inspect the window regulator operation, glass, regulator glass clamp and pad, and adjust the glass position.
 - a. Temporarily power the window regulator motor.
 - b. If the glass is already loose from the window regulator clamps, slide the glass to the full up position and temporarily tape glass in place.
 - c. Carefully position (raise) the window regulator for access to the two glass clamp bolts. Loosen the 10 mm bolt at each window regulator glass clamp. Temporarily tape in the full up position, any glass that was previously attached to the regulator glass clamps.
 - d. Position (lower) the window regulator so that two regulator glass clamps can be thoroughly inspected.
 - e. Inspect each clamp and verify that the **rubber pad** between each clamp is installed correctly to the clamp. During a prior installation, the sides of some pads may have been dislodged and forced into the bottom of the clamp. Adjust the rubber pads as required ([Fig. 5](#)).
 - f. Remove the temporary tape and carefully lower the glass into the open clamps. Make sure that the plastic plates on the lower edge of the glass properly engage the clamps. Make certain that the rubber pads have not slipped out of position.
 - g. Carefully raise the window regulator until it is almost to its full up position and slide the glass against the B-pillar window channel. Bring the glass and regulator to the full up position (window closed). Make sure glass is fully seated against B-pillar side of window frame weatherstrip prior to tightening the glass clamp bolts.
 - h. Tighten both glass clamp bolts to 11.8 Nm (105 in. lbs.).
 - i. Verify that the door glass and window regulator operate properly.



81318216

Fig. 5 REGULATOR CLAMPS AND DOOR GLASS

- 1 - Door Panel
- 2 - Glass And Glass Attaching Plastic Plates At Bottom Edge Of Glass
- 3 - Regulator Glass Clamps And Bolts
- 4 - Window Regulator

-
11. Install the water shield.
 12. Replace the door trim panel retention clips.
 13. Install door trim panel to the door.
 14. Install the three attaching screws. Tighten the screws to 2 Nm (16 in. lbs.).
 15. Install the negative battery cable to the battery. Set the clock to the correct time.
 16. Reset the express-up module per procedures in Step 1.
 17. If condition still exists, replace the window regulator and reset the express-up module.
Refer to TechCONNECT for detailed window regulator repair procedures: select the SERVICE INFO tab / 23 - Body / Door - Front or Door - Rear / Window Regulator / Removal and Installation.

POLICY:

Reimbursable within the provisions of the warranty.

TIME ALLOWANCE:

Labor Operation No:	Description	Amount
23-34-10-96	Front Door - Adjust Window Mechanisms - Right Side	0.5 Hrs.
23-34-10-97	Front Door - Adjust Window Mechanisms - Left Side	0.5 Hrs.
23-34-10-98	Front Door - Adjust Window Mechanisms & Replace Window Regulator - Right Side	0.7 Hrs.
23-34-10-99	Front Door - Adjust Window Mechanisms & Replace Window Regulator - Left Side	0.7 Hrs.

FAILURE CODE:

ZZ	Service Action
----	----------------